



St Andrew's Catholic Primary School

To Live, Love and Learn together, as Witnesses for Christ

0121 743 5675 <https://www.st-andrews.solihull.sch.uk> office@st-andrews.solihull.sch.uk

Instagram - Standrewsschool692



Our Lady and All Saints
Catholic Multi Academy Company
Strong in Faith

Twitter X - StAndrewsOLAAS

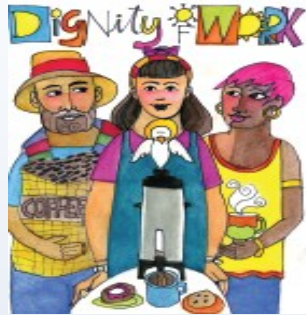
Friday 17th April 2026

This half term we are learning to be Grateful and Generous.

Grateful for our own gifts, for the gift of other people, and for blessings of each day;

and Generous with our gifts, both now and in the future.

Our Catholic Social Teaching focus for this half term is...



Gratitude turns what we have into enough.

(Melody Beattie - American Writer)



In the words of Pope Leo XIV...



Generosity: It is a love that is generous, not possessive; a love that forgives without question; a love that reaches out and never abandons others.



Welcome back to all of our families! We hope you have had a wonderful and restful break, filled with special moments spent with family and friends. It has been lovely to see the children return to school refreshed, happy, and ready to learn.

As we begin this new term, we would like to remind everyone that the season of Easter is not yet over. In the Church's liturgical calendar, Easter is celebrated for 50 days, making it one of the most important and joyful seasons of the year.



Here in school, we will continue to celebrate this special time of joy, hope and new life, reflecting on the Resurrection of Jesus and what it means for us in our daily lives. Our celebrations will continue until the coming of the Holy Spirit at Pentecost on Sunday 24th May 2026.

We look forward to sharing this important season with the children through prayer, liturgy and learning across the curriculum.



We love sharing and celebrating all of the wonderful things happening in and around school linked to learning and achievements of your children, so if you are not yet following us...head over to Instagram and give our page a follow!

You'll have a peek into our Catholic Life, learning, achievements, friendships and fun, that we are so very proud of!

Instagram - Standrewsschool692



WELCOME
TO THE WORLD

Lily Ruby



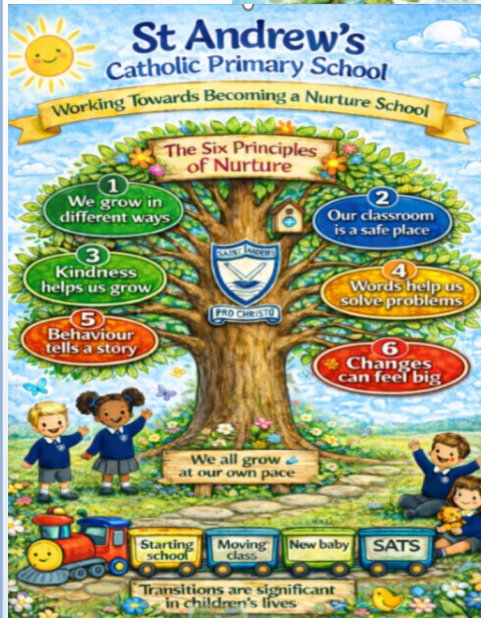
ARRIVED ON
Monday
30th March



WEIGHING
7lbs 9oz

Congratulations to
MRS AND MR WORSWICK
AND NOAH!





As we continue to work towards becoming a 'Nurture School,' we are delighted to introduce a new initiative in school: our 'Nurture Champions.'

This exciting incentive is rooted in the six principles of the Nurture Programme, which underpin our commitment to supporting the social, emotional and developmental needs of every child. Through this approach, we aim to continue building a school environment where all children feel safe, valued and ready to learn.

As part of this initiative, children who demonstrate these nurturing principles in their everyday school life—such as showing kindness, empathy, resilience and respect—will be recognised as Nurture Champions. They will have the opportunity to add their face to our special Nurture Tree, celebrating the positive contributions they make to our school community.



We are very much looking forward to celebrating our children in this new way and further strengthening our nurturing ethos across the school.

Thank you for your continued support in helping us create a caring and inclusive environment where every child can flourish.

Congratulations to these children below who have already been added to our Nurture Tree!



KS2 Prayers

Morning Prayer

**O Jesus,
through the most pure heart of Mary,
I offer you all my prayers,
thoughts, works and sufferings of this day
for all the intentions of your most Sacred Heart.
Amen.**



Grace Before Meals

Bless us, O Lord, and these your gifts
which we are about to receive
from your bounty.
Through Christ our Lord.
Amen.



Grace After Meals

We give you thanks, Almighty God,
for all your benefits,
who live and reign, world without end.
Amen.



Prayer at the end of the day

Lord Jesus Christ, as we come to the end of this school day,
Help us to reflect and to pray:
For the difficulties I have known, I ask for your help.
For the blessings I have received; I thank you.
May I seek to be an instrument of your peace in my home today.
Each day is a gift. May I look forward to a new start tomorrow.
May the journey of my life be an experience of your love,
your compassion, your forgiveness and your peace.
Amen.



School Uniform- Summer

Our Summer uniform can be worn from the term following the Easter holiday through to the end of the first Autumn term in October

Please label all your child's clothing



Boys Uniform

A school logo white polo shirt or a white short sleeve shirt with a tie (Option to wear Blue polo shirt in years 5&6)
Grey Trousers or Shorts with Sensible black Shoes



Girls Uniform

Blue and white Gingham summer dress/playsuit.
White shirt/polo with grey skirt/trousers (Option to wear blue shirt in years 5&6)
Tie can also be worn
Appropriate socks and sensible black shoes

Please ensure that your child has a cap and sun cream for the warmer months

Uniform- other

Long Hair must be tied back on all occasions

No trainers except for PE

Studs and Watches are the only Jewellery items that can be worn- expect on PE days

Excessive haircuts are not permitted i.e.. Tram lines and coloured hair

No makeup or nail varnish



**MIDLAND
SCHOOLWEAR**

Independent Uniform Retailer
est. since 1997

Our uniform provider is Midland schoolwear who offer both in-store and online services

Term Dates



School Year 2025 / 2026

Autumn term 2025

~~Term Starts: Monday 01 September 2025~~

~~Half Term Holiday: Mon 27 Oct 2025 to Fri 31 Oct 2025~~

~~Term Ends: Friday 19 December 2025~~

~~End of Term Holiday: Mon 22 Dec 2025 - Fri 02 Jan 2026~~

Spring term 2026

~~Term Starts: Monday 05 January 2026~~

~~Half Term Holiday: Mon 16 Feb 2026 to Fri 20 Feb 2026~~

~~Term Ends: Friday 27 March 2026~~

~~End of Term Holiday: Monday 30 March 2026 - Friday 10 April 2026~~

Summer term 2026

~~Term Starts: Monday 13 April 2026~~

~~(May Day: Monday 04 May 2026)~~

~~Half Term Holiday: Monday 25 May 2026 to Friday 29 May 2026~~

~~Term Ends: Friday 17th July 2026~~

INSET Days

~~Monday 1st September 2025~~

~~Friday 24th October 2025~~

~~Monday 5th January 2026~~

~~Monday 23rd February 2026~~

~~Monday 13th April 2026~~

~~Thursday 7th May 2026 (Polling Day)~~

~~Thursday 7th May 2026~~

Important Dates

Date	Year Group	Event
Fri 17th April	All	PTA Summer Fair, bottle donation & non uniform day
Mon 20th April	Year 1	RE Paschal Candle Workshop at 2:30pm
Fri 24th April	All	PTA Break the rules day
Thu 23rd April	Year 2	RE Inspire Workshop - Easter Gardens at 2:15pm
Thu 7th May	All	INSET Day- Closed for Voting
Saturday 9th May	Year 3	First Holy Communion at 12pm
Thu 21st May	Year 6	Trip to the Cathedral
Fri 22nd May	All	Break up for Half term
Mon 1st June	All	Children return
Fri 19th June	Year 2	Trip to Mary Arden's Farm
Tue 23rd June	Year 5	Trip to Harry Potter World
Tues 23rd June	Year 6	Confirmation at 7pm
Fri 26th June	Nursery & Reception	Trip to Thinktank
Mon 6th July- Wed 8th July	Year 6	Year 6 Residential

OUR PE DAYS ARE:

Monday	Nursery, Year 3 & 6
Tuesday	Year 2, 5 & 4
Wednesday	Year 2 & 3
Thursday	Reception, Year 5 & 1
Friday	Year 1, 4 & 6



Attendance and Punctuality



Last week, our KSI attendance winners were Reception.

Our Key Stage 2 attendance winners were Year 3.

Punctuality Winners: Year 2

Well done for the brilliant Attendance and Punctuality this week.

Class	Attendance	Unauthorised Absence. Excl Holidays
Reception	94.83%	0
Year 1	90.48%	0
Year 2	94.48%	0
Year 3	96.18%	0
Year 4	95.00%	0
Year 5	93.31%	0
Year 6	92.88%	0
Class	Lates before registers close	Lates after registers close
Reception	5	0
Year 1	2	0
Year 2	0	0
Year 3	3	0
Year 4	3	0
Year 5	2	0
Year 6	9	0

ATTENDANCE & PUNCTUALITY – EVERY MINUTE COUNTS

Being in school **every day and on time** is vital for children's learning, wellbeing **and safety**. We understand that mornings can be difficult for some families, and we are committed to working **supportively and proactively** to help every child attend regularly.

IMPORTANT SAFEGUARDING REMINDER – FIRST DAY CONTACT

School must be contacted on the FIRST day of absence.

If we have **not heard from a parent by 9:30am**, school will make contact to ensure your child is **safe and well**.

If we are unable to make contact, the **Educational Welfare Officer (EWO), Lynette**, will be informed and further checks may be made, including a home visit if required.

LATES ADD UP – MORE THAN YOU THINK

Arriving late has a real impact on children's learning and emotional wellbeing.

Just 10 minutes late every day means:

- **50 minutes of learning missed each week**
- **Over 30 hours missed across a school year**

✗ The equivalent of **almost a full week of school lost**

Lateness can also be unsettling for children and affect confidence, routines and friendships.

WE ARE HERE TO HELP

If attendance or punctuality is becoming difficult, **please talk to us early**. Support is available through:

- **Mrs Brady – Child & Family Support Worker & Attendance Lead**
- **Educational Welfare Officer**
- **Inclusion Team**

Family Hubs, offering drop-in sessions and practical support for families who are struggling

Please refer to the **timetables sent out last week**, or contact Mrs Brady to discuss how we can support your family.

MONITORING & WORKING TOGETHER

We monitor attendance closely and track patterns carefully. Where attendance falls below expected levels, families may be invited to meet with school and the EWO so that we can **work together to improve attendance**. Term-time holidays cannot be authorised except in exceptional circumstances, in line with school policy and government guidance.

THANK YOU

Thank you to the many families who ensure their children attend school **every day and arrive on time**. Your commitment makes a huge difference to learning, wellbeing and success.

Nursery

What a brilliant start back to Nursery this week. The children have been learning and exploring all about Minibeasts indoors and outdoors. We have been on a Minibeast hunt in groups outside with our clipboards and tick lists. The children were very excited to find worms, slugs, a snail, a millipede, beetles and a bumble bee. The children have also been painting their favourite minibeasts to display in the classroom too.

In RE this week, we have been discussing and singing about our Easter word 'Alleluia', and we have made a class poster to display in our nursery classroom.

It has been so lovely to see all the children back and ready to play and learn together.



Reception

This week in Reception, our learning has been based on the story *Farmer Duck*. We had lots of fun creating our own farm animals using a variety of different resources. We also made our own scarecrows, using natural materials to inspire our creativity. In Maths, we have been practising counting on, working hard to count all the way up to 20! What a great first week back reception have had!



Year One



During our Year 1 tennis lesson this week, the children focused on developing their hand-eye coordination through a range of fun and engaging activities. They practised tracking and throwing balls to one another with accuracy, as well as controlling their movements with increasing confidence.

The pupils showed great enthusiasm and perseverance, and it was fantastic to see their skills improving as the session progressed. Well, done, Year 1!

Year Two

This week in Year 2, we have been very busy learning about fractions! We explored how to halve numbers in a fun and interactive way by playing a game of Snakes and Ladders. Each time we landed on a square, we had to halve the number.

The children really enjoyed the challenge and had lots of fun while growing in confidence, well done Year 2!



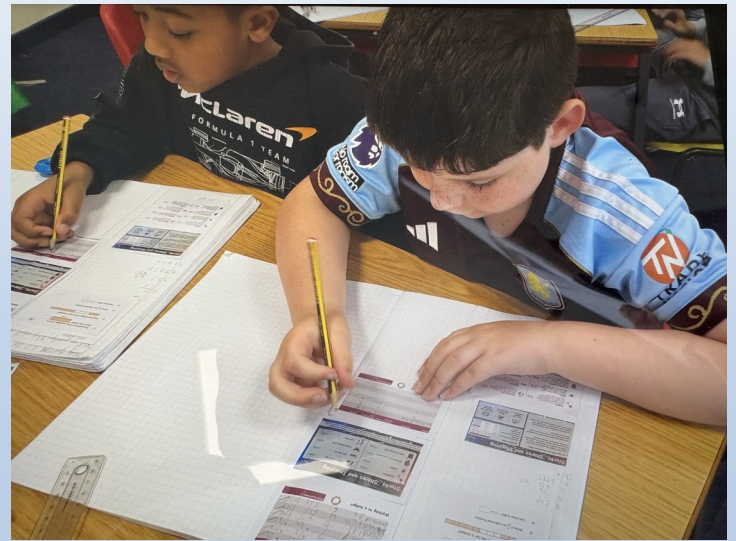
Year Four

Wow, what a fantastic first week back it has been! The children have jumped straight into their learning with great enthusiasm. In Science, we explored different habitats and even enjoyed a visit to our school pond, where we observed living things in their natural environment. In English, we got creative by making our own delicious smoothies, which inspired some brilliant writing. The week finished with the children designing persuasive leaflets to convince others to buy their very own smoothie creations - full of exciting vocabulary and fantastic ideas!

Year Five

Year 5 have returned full of energy and enthusiasm, ready to dive straight back into their learning. They have kicked off their Maths unit by exploring percentages, focusing on how to calculate percentages of different amounts. Building on this, the children were introduced to the concept of stocks and shares.

They were set an exciting challenge: to invest on behalf of a client and then calculate how much their chosen stocks had increased over the course of a year. The class embraced the task with great enthusiasm and thoroughly enjoyed comparing their results to see which investments generated the most profit for their client.



Year Six

**Year 6
SATs**

Year 6 have made a wonderful start back this term and are working hard to prepare for their SATs which are creeping ever closer! Well done for a great attitude to learning in our first week back, Year 6.

UPCOMING EVENTS

SUMMER TERM



MAY

9th - Holy communion
breakfast: Y2 Parents to support
22nd - PTA meeting



JUN

19th - Father's Day Boutique
26th - Summer fair chocolate donation &
non-uniform day



JULY

3rd - Summer fair cake donation &
non-uniform day
4th - Summer Fair
16th - Colour run and party & non-
uniform day



APR

17th - Summer fair bottle
donation & non-uniform day
24th - Break the rules day

**BREAK
RULES**



PTA Meeting - All Welcome!

Join us on Friday 17th April, 6-8pm at Olton Tavern (Function Room) for our next PTA meeting.

We'll be discussing the logistics for our upcoming Summer Fair and sharing plans for an exciting new end-of-year event - our Family Colour Run!

It's a great chance to hear what's coming up, share ideas, and get involved in making these events really special for the children. Whether you can help a little or a lot, we'd love to see you there!

Everyone is welcome.



Midland Schoolwear

www.midlandschoolwear.co.uk

ONLINE SHOP AVAILABLE

WE STOCK A COMPLETE RANGE OF

- Official School Uniforms
- Trousers, skirts, blouses, shirts and jumpers.
- Sportswear and Swimwear
- Boys & Girls Footwear, Trainers, Football Boots and Plimsolls
- Brownies, Rainbows, Cubs, Beavers and Scout Regulation Uniforms
- Leavers' Hoodies, Fleece Jackets, Reversible Fleece Jackets,
- Corporate Wear - available for small / large businesses, nurseries, tradesmen, clubs and teamwear.
- On site embroidery service (We offer a complete design and logo setup, embroidery service in store.)
- Garment Printing



Embroidery Service Available.
Student Foundation Trust Grants / Vouchers Accepted

0121 707 2033

Shop 9, 1160 Warwick Road, Acocks Green, B27 6BP