



St Andrew's Catholic Primary School

To Live, Love and Learn together, as Witnesses for Christ

0121 743 5675 <https://www.st-andrews.sotihull.sch.uk> office@st-andrews.sotihull.sch.uk

Instagram- Standrewsschoolb92



Our Lady and All Saints
Catholic Multi Academy Company
Strong in Faith

Twitter X- StAndrewsOLAAS

Friday 27th February 2026

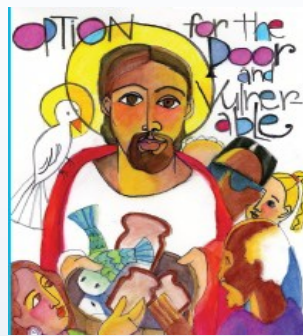
loving hopeful
attentive curious
faith-filled wise
generous grateful
eloquent discerning
intentional compassionate
truthful active

This half term we are learning to be **Intentional** and **Prophetic**.
Intentional in the way we live and use the resources of the earth,
guided by conscience; and **prophetic** in the example we set to
others.

loving hopeful
attentive curious
faith-filled wise
generous grateful
eloquent discerning
intentional compassionate
truthful active



Our Catholic Social Teaching focus for this half term is...



When you live each day with intentionality,
there's almost no limit to what you can do. You
can transform yourself, your family, your com-
munity and your nation.

(John C. Maxwell - American author and pastor.)

In the words of Pope Leo XIV...



I would like to invite you to a very
practical and frequently unappreciated
form of abstinence: that of refraining from
words that offend and hurt our neighbour.

Welcome back to our St Andrew's Community!

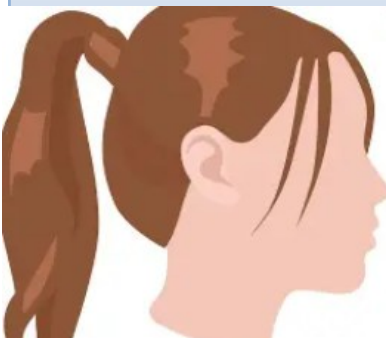
The children have come back enthusiastic, eager to learn and ready for the new challenges this half term will bring.

There's lots to look forward to in this special time of Lent leading up to Easter and we are all looking forward to embracing it and achieving incredible things!



On Thursday 7th May, school will be closed to allow the building to be used as a polling station. This arrangement has been in place in previous years and will continue this year. School operations will resume on Friday 8th May.

We appreciate your understanding and cooperation.



A reminder to parents and pupils that long hair should be tied up while at school, and makeup should not be worn as part of our school uniform policy. We appreciate your continued support in helping us maintain these standards.



We love sharing and celebrating all of the wonderful things happening in an around school linked to learning and achievements of your children, so if you are not yet following us...head over to Instagram and give our page a follow! You'll have a peek into our Catholic Life, learning, achievements, friendships and fun, that we are so very proud of!

Instagram - Standrewsschoolb92

New KS2 Prayers

Morning Prayer

**O Jesus,
through the most pure heart of Mary,
I offer you all my prayers,
thoughts, works and sufferings of this day
for all the intentions of your most Sacred Heart.
Amen.**



Grace Before Meals

Bless us, O Lord, and these your gifts
which we are about to receive
from your bounty.
Through Christ our Lord.
Amen.



Grace After Meals

We give you thanks, Almighty God,
for all your benefits,
who live and reign, world without end.
Amen.



Prayer at the end of the day

Lord Jesus Christ, as we come to the end of this school day,
Help us to reflect and to pray:
For the difficulties I have known, I ask for your help.
For the blessings I have received; I thank you.
May I seek to be an instrument of your peace in my home today.
Each day is a gift. May I look forward to a new start tomorrow.
May the journey of my life be an experience of your love,
your compassion, your forgiveness and your peace.
Amen.



Term Dates



School Year 2025 / 2026

Autumn term 2025

Term Starts: Monday 01 September 2025

Half Term Holiday: Monday 27 October 2025 to Friday 31 October 2025

Term Ends: Friday 19 December 2025

End of Term Holiday: Monday 22 December 2025 - Friday 02 January 2026

Spring term 2026

Term Starts: Monday 05 January 2026

Half Term Holiday: Monday 16 February 2026 to Friday 20 February 2026

Term Ends: Friday 27 March 2026

End of Term Holiday: Monday 30 March 2026 - Friday 10 April 2026

Summer term 2026

Term Starts: Monday 13 April 2026

(May Day: Monday 04 May 2026)

Half Term Holiday: Monday 25 May 2026 to Friday 29 May 2026

Term Ends: Friday 17th July 2026

INSET Days

Monday 1st September 2025

Friday 24th October 2025

Monday 5th January 2026

Monday 23rd February 2026

Monday 13th April 2026

Thursday 7th May 2026

Important Dates

Date	Year Group	Event
Thu 5th March	Year 6	SATS Parent Workshop 2.30pm
Fri 6th March	All	World Book Day
Mon 9th March	Reception and Year 1	Animal man
Tue 10th March	All	Individual School Photos
Fri 13th March	All	PTA Mother's Day Boutique
Fri 13th March	Nursery	Celebration of the word 9.15am
Mon 16th March	Year 3	Sacrament of Reconciliation 10.30am
Tue 17th March	Year 5	Celebration of the word 2.50pm
Wed 18th March	Year 4	Trip to Cadbury World
Wed 18th March	Year 3	Sacrament of Reconciliation 10.30am
Fri 27th March	All	PTA Easter Disco & non uniform day
Fri 27th March	All	Break up for Easter Holidays
Mon 13th April	All	INSET DAY- School not open to Children
Tue 14th April	All	Children return
Fri 17th April	All	PTA Summer Fair bottle donation & non uniform day
Fri 24th April	All	PTA Break the rules day
Thu 7th May	All	INSET Day- Closed for Voting
Saturday 9th May	Year 3	First Holy Communion at 12pm
Thu 21st May	Year 6	Trip to the Cathedral
Fri 22nd May	All	Break up for Half term
Mon 1st June	All	Children return
Tues 23rd June	Year 6	Confirmation at 7pm
Mon 6th July- Wed 8th July	Year 6	Year 6 Residential

PE Days

Monday	Nursery, Year 3 & Year 6
Tuesday	Year 2 & 4
Wednesday	Year 2, 5 & 3-Swimming
Thursday	Reception, 1 & 5
Friday	Year 1, 4 & 6

FOOD
FESTIVAL

WORLD BOOK DAY

5th March

Beef Burger
with Wedges & BBQ Beans
Or
Quorn Burger
with Wedges & BBQ Beans
&
Orange
Marmalade Sponge

Topped Pasta, Filled Jacket Potatoes &
Sandwiches are also available





Attendance and Punctuality



Our KSI attendance winners were Year 2.

Our Key Stage 2 attendance winners were Year 4.

Punctuality Winners: Year 2

Well done for the brilliant Attendance and Punctuality this week.

Class	Attendance	Unauthorised Absence. Excl Holidays
Reception	88.28%	0
Year 1	92.33%	0
Year 2	93.33%	0
Year 3	94.12%	0
Year 4	97.33%	0
Year 5	95.19%	0
Year 6	86.06%	0
Class	Lates before registers close	Lates after registers close
Reception	3	0
Year 1	4	0
Year 2	1	0
Year 3	2	0
Year 4	3	0
Year 5	3	0
Year 6	6	0

ATTENDANCE & PUNCTUALITY – EVERY MINUTE COUNTS

Being in school **every day and on time** is vital for children's learning, wellbeing **and safety**. We understand that mornings can be difficult for some families, and we are committed to working **supportively and proactively** to help every child attend regularly.

IMPORTANT SAFEGUARDING REMINDER – FIRST DAY CONTACT

School must be contacted on the FIRST day of absence.

If we have **not heard from a parent by 9:30am**, school will make contact to ensure your child is **safe and well**.

If we are unable to make contact, the **Educational Welfare Officer (EWO), Lynette**, will be informed and further checks may be made, including a home visit if required.

LATES ADD UP – MORE THAN YOU THINK

Arriving late has a real impact on children's learning and emotional wellbeing.

Just 10 minutes late every day means:

- **50 minutes of learning missed each week**
- **Over 30 hours missed across a school year**

✗ The equivalent of **almost a full week of school lost**

Lateness can also be unsettling for children and affect confidence, routines and friendships.

WE ARE HERE TO HELP

If attendance or punctuality is becoming difficult, **please talk to us early**. Support is available through:

- **Mrs Brady – Child & Family Support Worker & Attendance Lead**
- **Educational Welfare Officer**
- **Inclusion Team**

Family Hubs, offering drop-in sessions and practical support for families who are struggling

Please refer to the **timetables sent out last week**, or contact Mrs Brady to discuss how we can support your family.

MONITORING & WORKING TOGETHER

We monitor attendance closely and track patterns carefully. Where attendance falls below expected levels, families may be invited to meet with school and the EWO so that we can **work together to improve attendance**. Term-time holidays cannot be authorised except in exceptional circumstances, in line with school policy and government guidance.

THANK YOU

Thank you to the many families who ensure their children attend school **every day and arrive on time**. Your commitment makes a huge difference to learning, wellbeing and success.

Nursery

Fantastic week back after half term.

We have introduced a new topic this half term in which we will be learning all about Fairytales. Our Fairytale this week was Jack and the Beanstalk!

The children have explored the story of Jack and the Beanstalk, making Character puppets, painting and cutting and sticking Beanstalks. The children have really enjoyed planting their very own individual beans too which we will watch grow over the next few weeks, we are very excited about this.

Nursery have been doing lots of exploring in the outdoor area this week. We have painted a tall Beanstalk and roleplayed being Jack and the Giant, lots of fun was had with Mrs Hughes roleplaying being the Giant!

In Maths this week we have focused on conversation of number, knowing that numbers can change if things are added or taken away.

In RE this week we have started Lent and as a class we have focused on the special people in our lives and why we love them.



Reception

What a fantastic first week back we have had in Reception!

Our new story focus is *The Tiger Who Came to Tea* by Judith Kerr, and the children have absolutely loved it!

We have set this up in our role play and writing areas to help inspire their thoughts, ideas and storytelling. It has been wonderful to see their imaginations come to life as they retell the story and create their own tiger adventures.

In Maths, we have been focusing on number formation and exploring the concepts of one more and one less.

The children have been working hard to form their numbers correctly and are growing in confidence each day.

We have also had lots of fun getting creative by designing and making our very own teapots for the tiger. The classroom has been full of fantastic ideas, teamwork and big smiles!

Well done, Reception - what a brilliant start to the term!



Year One

This week, Year 1 were lucky to welcome a special visitor who taught us all about road safety. The children learned how to cross the road safely using the Green Cross Code, the importance of stopping, looking, and listening, and how to stay safe near roads and driveways.

Pupils asked brilliant questions and shared their own experiences, saying things like "I hold my grown-up's hand when I cross" and "I look both ways for cars." The session was fun, interactive, and really helped the children understand how to keep themselves safe when out and about.



Year Two

This week in Year 2, our learners got hands on with their science experiments!

The children explored different materials to see which ones are waterproof.

They made predictions, conducted tests, and observed the results.



Year Three

In Maths this week, Year 3 have been learning how to order fractions. The children used practical resources and visual models to compare different fractions and decide which were bigger or smaller. They enjoyed holding up their fractions and working together to explain their thinking as they developed their confidence with fractions.



Year Four

This week, Year 4 led us in our first school Mass of Lent, a special time for prayer and reflection in the Church's year.

The children showed great reverence and maturity as they confidently proclaimed the readings, led the bidding prayers and sang beautifully. Their calm and respectful manner helped create a truly reflective atmosphere.

We are very proud of Year 4 for the example they set for our school community, and we thank all families who joined us.

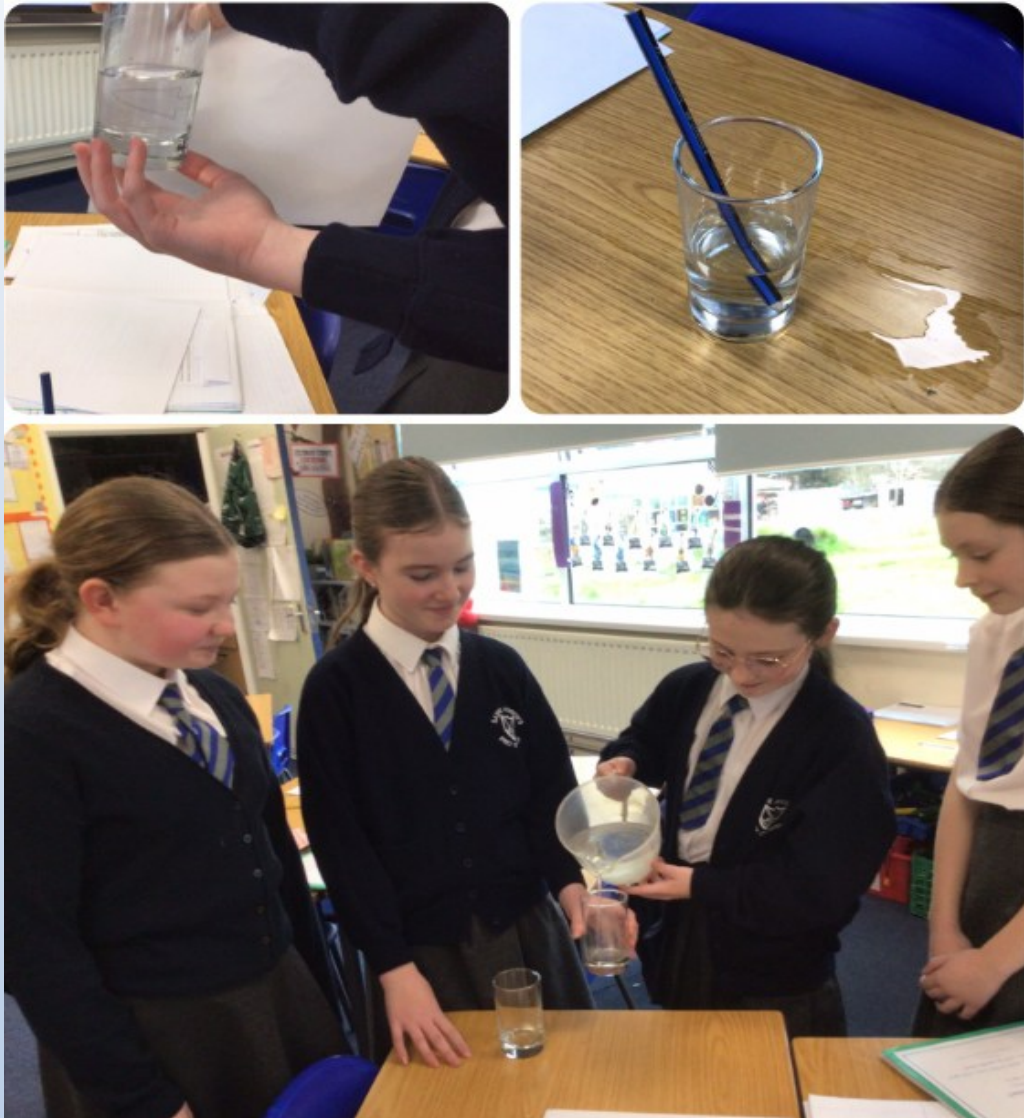


Year Six

One of our highlights this week was a hands-on experiment demonstrating "arrow reversal" which occurs when light changes direction when it passes through different mediums.

The children drew arrows on paper, placed them behind a clear container of water, and observed what happened when they looked through the water from the other side. To their amazement, the arrows appeared to flip direction!

This surprising effect occurs because the water bends (or refracts) the light travelling from the paper to our eyes, making the image appear reversed. Well done, Year 6, for your curiosity and enthusiasm as young scientists!



UPCOMING EVENTS

SPRING TERM



JAN

16th - Summer fair gift donation
& non-uniform day



FEB

6th - Sweet Tooth Sale
13th - £1 dress in red or pink day
27th - PTA meeting

MAR

13th - Mother's Day Boutique
27th - Easter Disco & non-uniform day

#1
MOM

APR

17th - Summer fair bottle
donation & non-uniform day
24th - Break the rules day

**BREAK
RULES**

Mother's Day Boutique

FRIDAY 13TH MARCH

**ST ANDREW'S PTA ARE HOSTING OUR
MOTHER'S DAY BOUTIQUE FOR ALL
CHILDREN.**

**CHILDREN CAN COME AND CHOOSE A
GIFT FOR THEIR LOVED ONE FOR JUST
£3.50 PER CHILD.**

We're excited to host this year's Mother's Day Boutique on Friday 13th March.

Children can buy a gift for £3.50, with payment needed before Friday 6th March.

Please send cash in a sealed, clearly labelled envelope (name + year group) or pay by BACS to the PTA account using your child's initial.surname + year (e.g. A.Masters 3). For siblings, use surname + year groups (e.g. Masters 1 3).

If you'd like to discuss this or would like any kind of support, please reach out to us through standrews-pta@hotmail.com

MPOWER MARTIAL ARTS

30% OFF*

Your child will learn the benefits of:

- Fitness
- Friends
- Discipline
- Self Defence
- Co-ordination

And many more.....

In a Professional, Fun
and Friendly
environment



"Really happy with my child's progress at Mpower Martial Arts. He has progressed up to a green belt and is doing well and has shown increased confidence in other activities as well, so very happy."

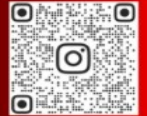


Mpower Martial Arts

Email: mpowermuaythai@gmail.com
Phone: 07933017841



Subject to availability
Waiting lists may apply



Monday
Olton Friary Church
4.10pm - 4.55pm
(Ages 6-10)

Tuesday
Shirley Parish
St James the Great
4.00pm - 4.45pm
(Ages 6-10)

Wednesday
Mill Lodge Primary School
3.40pm - 4.25pm
4.30pm - 5.15pm
(Ages 6-10)

Friday
Fitness First Solihull
4.00pm - 4.45pm
(Ages 11+)

OLTON PARENTS!!!

Become a part of the Mpower Martial Arts community.

We have NEW SPACES at our Olton Friary R C location on Monday's

Ages 6+

Time: 4.10pm - 4.55pm

Do you want your child to be a part of the 4-8% of individuals to have an undying life skill?

We have produced some amazing individuals with effective tried and tested skills and still continue to do so.

Promotions are across 6 DIFFERENT SCHOOLS & with up to 30% off* upon joining Mpower Martial Arts, don't struggle to reserve your child's space and miss an opportunity to Mpower your child.

Unsure whether to make the commitment?, check out what people have said and videos via our Facebook & Google page.

<https://www.facebook.com/MpowerMuayThai>

<https://g.co/kgs/ifcBs3P>

Claim your 2 FREE TRIALS and see if we are right for your child.

To reserve a GUARANTEED SPACE contact Mpower Martial Arts on:

07933 017841

mpowermuaythai@gmail.com

Reece Tropman - Co Founder.

Mpowering the next generation of Black Belts

*Discounts only apply upon signing up on your child's 3rd session with a maximum of 30% off.

Varying discounts apply when joining.

Offer shown is in relation to our Elite Pack.



Midland Schoolwear

www.midlandschoolwear.co.uk

ONLINE SHOP AVAILABLE

WE STOCK A COMPLETE RANGE OF

- Official School Uniforms
- Trousers, skirts, blouses, shirts and jumpers.
- Sportswear and Swimwear
- Boys & Girls Footwear, Trainers, Football Boots and Plimsolls
- Brownies, Rainbows, Cubs, Beavers and Scout Regulation Uniforms
- Leavers' Hoodies, Fleece Jackets, Reversible Fleece Jackets,
- Corporate Wear - available for small / large businesses, nurseries, tradesmen, clubs and teamwear.
- On site embroidery service (We offer a complete design and logo setup, embroidery service in store.)
- Garment Printing



Embroidery Service Available.
Student Foundation Trust Grants / Vouchers Accepted

0121 707 2033

Shop 9, 1160 Warwick Road, Acocks Green, B27 6BP